

STRENGTHENING FAMILIES THROUGH COMMUNITY COLLABORATION

2019 COMMUNITY ISSUE BRIEF



NORTH TAHOE-TRUCKEE, CALIFORNIA

The North Tahoe-Truckee region is comprised of the Town of Truckee and unincorporated communities spanning three counties: Placer, Nevada, and El Dorado. County lines and other jurisdictional boundaries divide neighborhoods, and even homes, within the area. Isolated in the mountains with lower populations than our urban counterparts, North Tahoe-Truckee has access to fewer resources and services for our community members. Furthermore, while according to jurisdictional boundaries residents live in one place, the reality is that many of our residents work or attend school in other parts of the region. This makes it difficult to know where and how to access the most basic resources that they need.

North-Tahoe Truckee is also the playground for multiple metropolitan areas including Reno, Sacramento, and the Bay Area and is fueled by a tourist based economy. The salaries of many second homeowners and visitors largely drive the cost of food, utilities, transportation, and housing in the region. This makes surviving on a service sector wage extremely difficult. The housekeepers, gardeners, restaurant and construction workers who keep the tourist economy going are further impacted by fluctuations in the weather, seasons, and economy— all of which can leave workers economically unstable.

The overall cost of living in all North Tahoe-Truckee neighborhoods exceeds the national average (2018 Sperling's Best Places)

In some North Tahoe-Truckee neighborhoods this high cost of living is combined with incomes as low as \$35,000 per year and up to 35% of families living in poverty (U.S. Census, 2012-2016 ACS 5-year estimates)

Housing costs in Truckee are more than **300%** of the national average (2018 Sperling's Best Places)

Incomes are stagnant when compared to rising housing costs, creating an increasing "price to income ratio," a ratio that is already significantly higher than California overall (2017 Eastern Placer County Workforce Housing Needs Assessment)

POPULATION HIGHLIGHTS*

Truckee 2017 population 16,308,
↑ **1%** since 2010*

Lakeside¹ 2017 population 7,457,
↓ **23%** since 2010*

Other unincorporated² North Tahoe-Truckee 2017 population 4,294,
↓ **26%** since 2010*

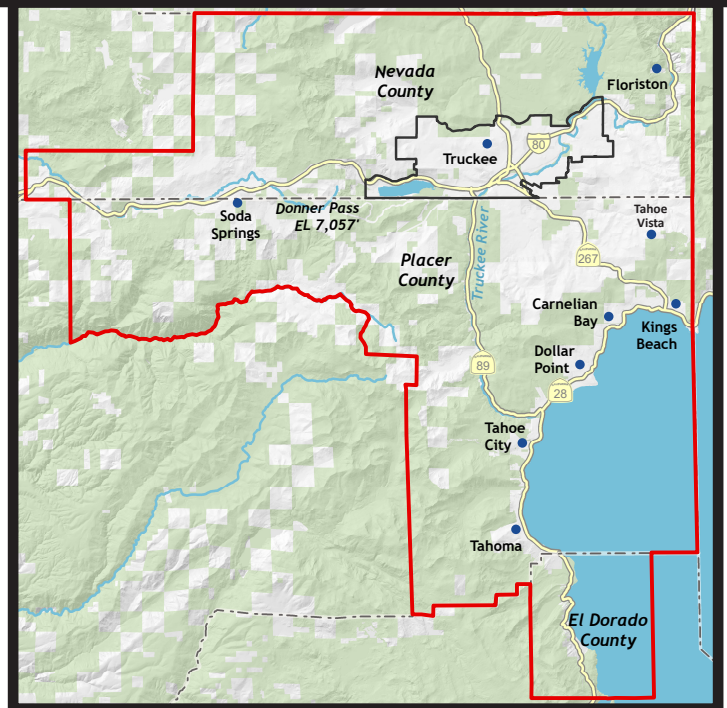
The Town of Truckee has become the population center of the region and is the only part of the area with an increasing population.

MEDIAN HOUSEHOLD INCOME* HIGHLIGHTS

Truckee MHI**: \$89,154,
↑ **36%** since 2010

Kings Beach MHI**: \$46,023,
↑ **0%** since 2010

Tahoe Vista MHI**: \$53,571,
↓ **24%** since 2010



1. Lakeside population includes Carnelian Bay, Kings Beach, Dollar Point, Tahoe Vista, Tahoe City, and Tahoma

2. Other unincorporated includes Floriston, Soda Springs, Kingvale, and all other unincorporated areas of the Tahoe Truckee Unified School District's boundaries not included in Lakeside or Truckee calculations

➤ 2017 North Tahoe-Truckee Median Household Income **\$74,830, up 20%** since 2010*

➤ In 2016, **26%** of North Tahoe-Truckee residents spent more than half their income on housing

➤ North Tahoe-Truckee 2017 population **28,059, down 11.5%** since 2010*

➤ 2017 North Tahoe-Truckee Median Household Income for Hispanic households **\$48,654, up 10.5%** since 2010*

➤ Applicants for one of the 474 below market rate units in North Tahoe-Truckee **wait up to three years** for a unit to become available

➤ North Tahoe-Truckee Hispanic population **17%*, down 10.5%** since 2010*

*Source: U.S. Census, 2010 Demographic Profile Data, 2006-2010 ACS 5-year estimates, and 2013-2017 ACS 5-year estimates

**This includes the income of the householder and all other individuals 15 years old and over in the household, whether they are related or not. Because many households consist of only one person, average household income is usually less than average family income.

WHO WE ARE

The Community Collaborative of Tahoe Truckee (CCTT), a program of the Tahoe Truckee Community Foundation (TTCF), is comprised of over 45 health, education, and social service organizations and coalitions who have worked together for over 20 years to address the complex issues and fundamental needs of community members in North Tahoe-Truckee. The Collaborative seeks to understand the stories of our local people, and we root our work in the power of data to inform our leaders and drive results.



OUR COLLABORATIVE APPROACH

Collective impact is a framework to tackle deeply entrenched and complex social problems. It is an innovative approach to making collaboration work across sectors to achieve significant and long-lasting social change. CCTT partners have embraced a collective impact and coalition building approach to address issues impacting our local community, unifying around a common vision and strategies.

HOUSING

In 2016 it became clear that housing was the most significant factor impacting the economic struggles of families and individuals. Spurred by CCTT's advocacy, a regional housing needs assessment was performed and TTCF launched the Mountain Housing Council of Tahoe Truckee (MHC) to accelerate housing solutions.



MOUNTAIN HOUSING COUNCIL OF TAHOE TRUCKEE

The Mountain Housing Council of Tahoe Truckee (MHC) is comprised of 29+ regional stakeholder partners with a vision that all people who work and live in the region have access to diverse, quality, and achievable local housing. Partners include governmental jurisdictions, businesses, networking groups, and nonprofit organizations. These partners came together to develop a three-year regional housing agenda.

ACHIEVABLE LOCAL HOUSING

In 2018, the Mountain Housing Council recommended that regional leaders adopt and develop policies for a new definition of affordability that includes income earners who make up to 195% of Area Median Income (AMI). With rising home prices, the affordability target continues to rise for families who are trying to stabilize their housing situation.

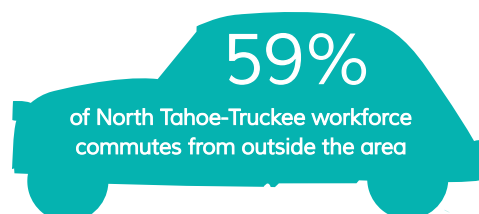


In Winter 2015, the Emergency Warming Center (EWC) opened to provide a warm meal and safe place to sleep for individuals experiencing homelessness or who do not have adequate shelter during extreme weather. The EWC opened thanks to United for Action, a coalition of faith based groups, nonprofits, Church of the Mountains, and Placer and Nevada Counties. It is run by staff and a team of volunteers.

38,801
Total Housing Units



67% of full-time residents pay more than 30% of income on housing



43 North Tahoe-Truckee individuals experienced homelessness in 2019: 32 in Nevada County and 11 in Placer County (2019 HUD Point-in-Time Count)

39 open nights in Winter 2017-18 (Emergency Warming Center annual data)

Source: Truckee North Tahoe Workforce Housing Study

EDUCATION

NORTH TAHOE-TRUCKEE ISSUE BRIEF 2019



Tahoe Truckee Unified School District (TTUSD) is the only K-12 school district serving North Tahoe-Truckee, a 720 square mile area. Within the district there are five elementary schools, two middle schools, two high schools, and three additional educational options: an alternative 6th through 12th grade school, K-8th expeditionary learning charter school, and a continuation high school.

The region is also served by an accredited community college. Sierra College's campus in Truckee offers degree programs, career and technical education, and community learning opportunities beyond high school.

Following a decline in enrollment in the early 2000's, approximately 4,000 students enroll in TTUSD schools annually. TTUSD tracks data for student groups such as students who have not always been fluent in English ("Ever English Learners"), Hispanic students, and students who are from socioeconomically disadvantaged families. At the Sierra College, Truckee-Tahoe Campus, around 500 students enroll in classes annually. The college doesn't track students' socioeconomic status at this time.

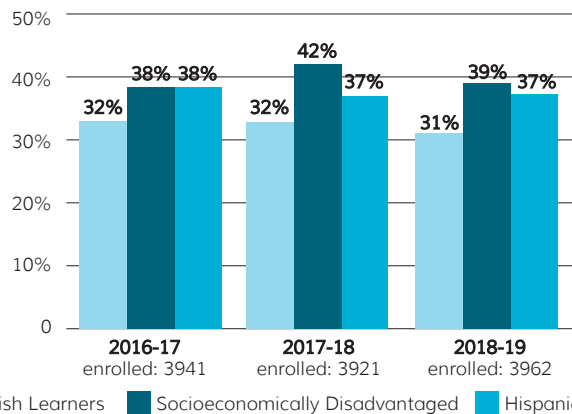
From 2016 to 2017, there was a 7% increase in the number of students enrolled in at least one AP class at TTUSD

From 2015 to 2017, there was a 27% increase in the number of students enrolled in at least one Career Technical Education class at TTUSD

COLLEGE & CAREER READINESS

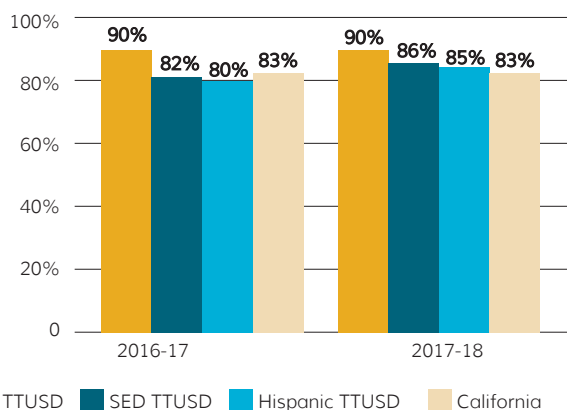
With graduation rates exceeding those of the state and over half of graduating students completing the required credits to attend a University of California or a California State University, students graduate from TTUSD with the opportunity to achieve personal and academic goals beyond high school.

TTUSD ENROLLMENT



Source: Tahoe Truckee Unified School District

GRADUATION RATE



Source: California Department of Education

HIGHER EDUCATION

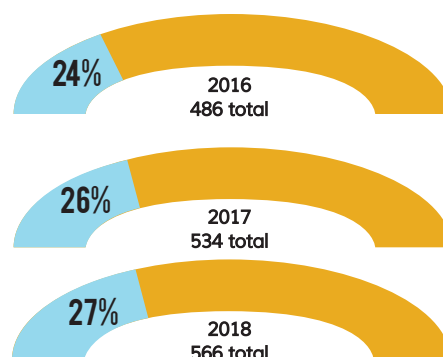
TTUSD and the Sierra College, Tahoe-Truckee Campus work together to make higher education accessible to the community. TTUSD students, along with other adult students, have the opportunity to enroll in Sierra College classes for college credit. The Sierra College, Tahoe-Truckee Campus continues to see strong success rates and growing enrollment. TTUSD graduates continue their education at higher education institutions across the state and beyond.

In 2018, 56% of all graduating TTUSD seniors accepted a community-based scholarship

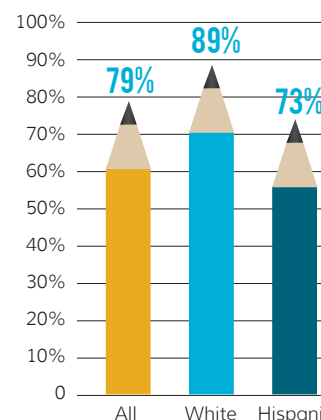
SIERRA COLLEGE, TRUCKEE-TAHOE CAMPUS

ENROLLMENT

Hispanic Enrolled All Enrolled



SUCCESS RATE*



*Success rate is defined as percentage of students achieving a C-average or better.
Source: Sierra College, Tahoe-Truckee Campus

COLLABORATIVE RESPONSE: EDUCATION >>>



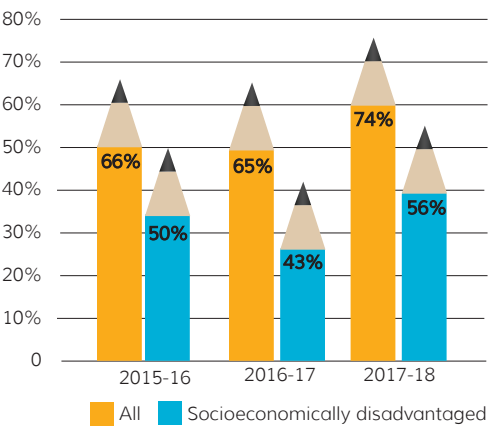
TAHOE TRUCKEE READS

Launched in 2011, Tahoe Truckee Reads is a community effort to improve grade level literacy in our region. Tahoe Truckee Reads’ strategy to turn the curve on grade level reading includes three main elements: Attendance, Avoiding Summer Learning Loss, and School Readiness.

THIRD GRADE READING

Third grade is a pivotal point in a child’s education, where a student transitions from “learning to read” to “reading to learn.” This means students who are not reading proficiently by the end of third grade are likely to fall behind continuously from this point forward, and directly undermines efforts to end intergenerational poverty, close the achievement gap, and reduce high school drop-out rates. According to the National Campaign for Grade Level Reading, 40% of all children and only 20% of low-income children read proficiently by the end of third grade.

THIRD GRADE READING PROFICIENCY*



TAHOE TRUCKEE READS STRATEGIES

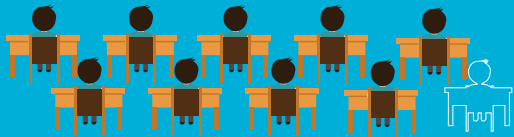
SCHOOL READINESS:

Early Learning providers and other community partners promote early literacy and social emotional skills for children 0-5 years old, ensuring young scholars are prepared for kindergarten.



SUMMER LEARNING LOSS:

Compared to their peers who participate in summer activities, students who lack summer enrichment opportunities are at an increased risk of losing what they learned during the school year, year after year. Summer programs provide opportunities to students throughout the North Tahoe-Truckee community.



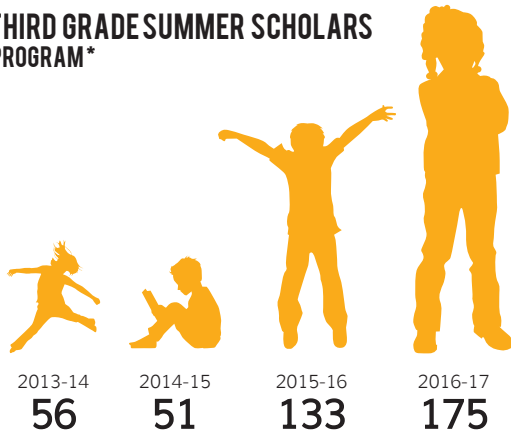
ATTENDANCE:

Students who miss 10% (or more) school days per year are less likely to reach grade level reading proficiency. Programs throughout TTUSD aim to reduce this “chronically absent” population.


In 2017, nearly 300 families visited the Kings Beach or Truckee Family Rooms
(Source: North Tahoe Family Resource Center, Family Resource Center of Truckee)

FIRST THROUGH THIRD GRADE SUMMER SCHOLARS SUMMER LEARNING PROGRAM*

Community reading programs reach underserved children in five North Tahoe-Truckee neighborhoods



TTUSD reduced chronic absenteeism (10% or more days absent) between 2012 and 2016 by 39%*

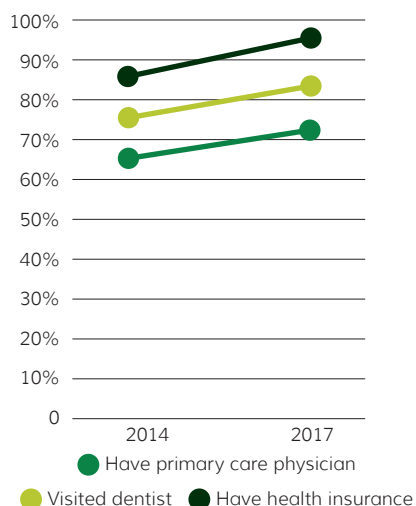
TAHOE  TRUCKEE
**EXCELLENCE
IN EDUCATION**
FOUNDATION

*Source: Tahoe Truckee Unified School District

The **Social Determinants of Health** are factors impacting health, including personal behaviors, environment, access to care, and socioeconomic status. CCTT measures a variety of health indicators for youth and adults.

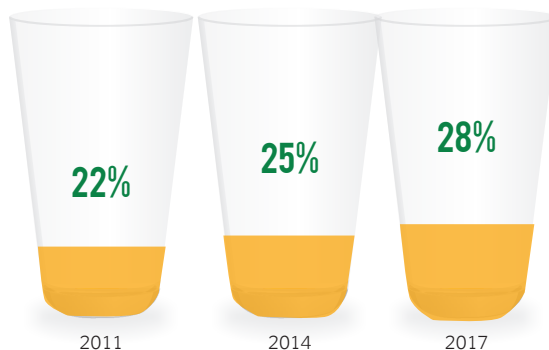
As vibrant and beautiful as our mountain region is, our community struggles with high rates of substance abuse and growing mental health issues. Significant disparities among age groups and between the Hispanic and Caucasian populations have appeared over the course of three Community Health Needs Assessments performed by the Tahoe Forest Hospital.

ACCESS TO HEALTH CARE*



ADULT BINGE DRINKING*

4+ (female) or 5+ (male) drinks in a sitting

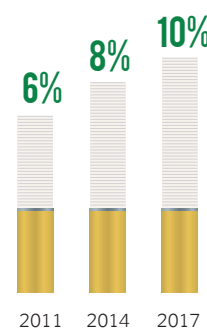


(Source: Tahoe Forest Community Health Needs Assessment)

16%
of all California adults reported binge drinking in 2017

ADULT SMOKING*

Adults who are regular smokers



7%
Adults who regularly use e-cigarettes*

57%
of adults experienced depressive symptoms in the past 30 days*

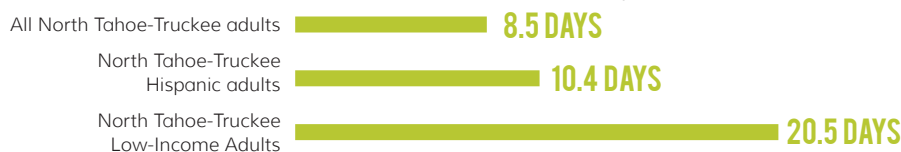
MENTAL HEALTH

In 2014, community data showed a disparity in poor mental health days for those who are low-income, and those who are Hispanic/Latino. The Tahoe Truckee Suicide Prevention Coalition's goal is to mobilize mental health support for youth and adults and prevent future suicides through community education, outreach, and strategy implementation. Tahoe Forest Hospital will seek a broader sampling of Hispanic and low-income community members in the 2020 survey. Meanwhile, system improvements are being made to improve access to behavioral health treatment and prevention for people of all ages.

ADULTS REPORTING 1+ BAD MENTAL HEALTH DAYS PER MONTH

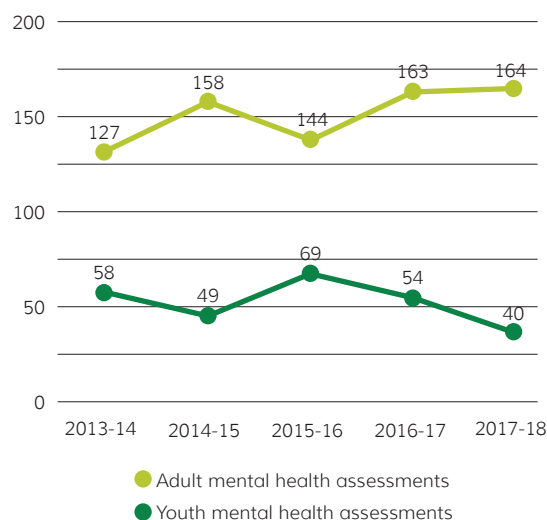


NUMBER OF POOR MENTAL HEALTH DAYS PER MONTH, 2014



*Source: Tahoe Forest Hospital Community Health Needs Assessment

MENTAL HEALTH ASSESSMENTS



An assessment occurs when an adult or youth is at risk for hurting themselves or others and goes to the hospital for an emergency mental health evaluation.

Source: Tahoe Forest Hospital

COLLABORATIVE RESPONSE: HEALTH >>>>

Our collective efforts to decrease substance use and address youth mental health concerns have had some success, but remain in need of more focus and support.

YOUTH HEALTH

In 2015, the Youth Health Initiative came together in North Tahoe-Truckee to look at the health needs of adolescents in the region. The Youth Health Initiative connects students to support and services at schools and throughout the community. Specific strategies include a *Wellness Network* as well as *Behavioral Health* and *Substance Use* treatment, *Oral Health* services, and *Reproductive Health* resources, education, and services.

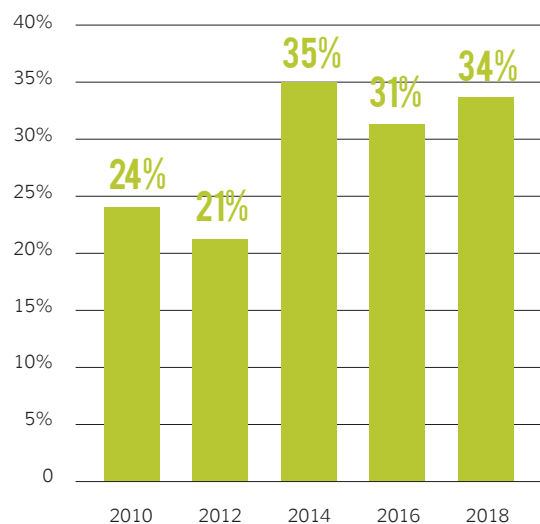


SUBSTANCE ABUSE



Formed in January 2010, Tahoe Truckee Future Without Drug Dependence (TT-FWDD) is a community-wide coalition comprised of volunteers from at least 12 different sectors working together to prevent youth substance abuse. Sectors include youth, parents, faith, schools, youth serving organizations, law enforcement, business, civic, government, health care, media, and other treatment professionals.

TTUSD 11TH GRADERS EXPERIENCING CHRONIC SADNESS/HOPELESSNESS*

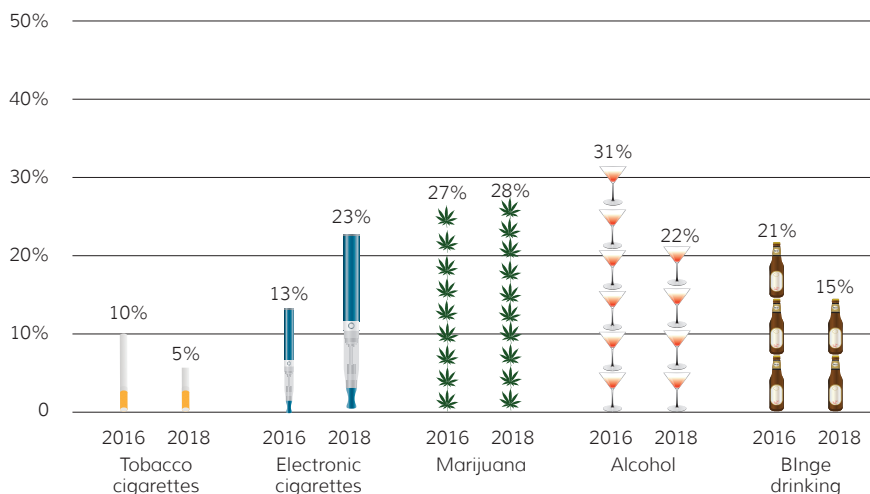


MENTAL HEALTH

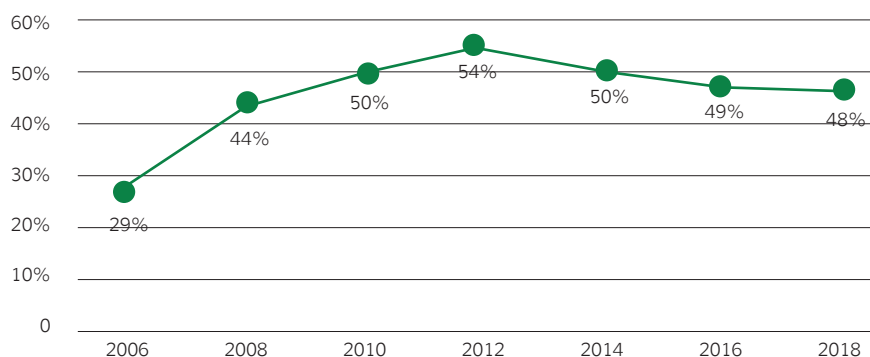
Several organizations offer programs designed to support residents' mental health. The Tahoe Truckee Suicide Prevention Coalition's goal is to mobilize mental health support for youth and prevent future suicides through community education, outreach, and strategy implementation.

TTUSD 11TH GRADE SUBSTANCE ABUSE PAST 30 DAYS*

Source: California Healthy Kids Survey



TTUSD 11TH GRADERS WHO FEEL CONNECTED TO SCHOOL *



**TAHOE TRUCKEE
SUICIDE PREVENTION
COALITION**

In 2017-18, the
Suicide Prevention
Coalition funding
provided mental
health screenings to
154
high school
students

*Source: California Healthy Kids Survey

PARTNERS

Adventure Risk Challenge	Girls on the Run Sierras	Sierra Mental Wellness Group
Aim High	Granite Wellness Centers	Sierra Nevada Children's Services
Alta Regional	KidZCommunity Head Start	Sierra Senior Services
Arts in Wellness	KidZone Museum	SOS Outreach
Big Brothers Big Sisters of Nevada County	Mental Health America of Northern California	State of California, Department of Vocational Rehabilitation
Boys and Girls Club of North Lake Tahoe	Mercy Housing/Riverside Homes	Tahoe Forest Health System
Child Advocates of Nevada County	Nevada County Human Services Agency	Tahoe SAFE Alliance
Choices Person Centered Services	North Tahoe Family Resource Center	Tahoe Truckee Unified School District
Connecting Point (Nevada County)	Placer County Health and Human Services	Truckee Lutheran Presbyterian Church
Emergency Warming Center	Placer County Network of Care	Truckee North Tahoe Transportation Management Agency
Excellence in Education	Placer County Office of Education	Truckee Police Department
Family Resource Center of Truckee	Placer County Sheriff's Office	UC Davis Tahoe Environmental Research Center
Foothills Truckee Healthy Babies	Project MANA	Uplift Family Services
For Goodness Sake	Read Up	Western Sierra Medical Group
FREED	Sierra Agape	
Gateway Mountain Center	Sierra College	

COALITIONS

Communities 4 Kids (Tahoe Truckee Child Abuse Prevention Council)	Tahoe Truckee Perinatal Outreach Team	Truckee North Tahoe Youth Health Initiative
Tahoe Truckee Future Without Drug Dependence	Tahoe Truckee Reads	United for Action
	Tahoe Truckee Suicide Prevention Coalition	

FUNDERS

**S.H. COWELL
FOUNDATION**

Katz Amsterdam
Charitable Trust



To see full results, visit www.ttcf.net/community-collaborative.
For more information, contact Alison Schwedner, Director of the Community Collaborative of Tahoe Truckee, at alison@ttcf.net. Or call the TTCF office at 530-587-1776.

The Community Collaborative of Tahoe Truckee is a partnership of non-profit and public organizations working together to address fundamental needs of families in the Tahoe Truckee Region. The Community Report Card is powered by Clear Impact.